

# EUROBENT CS

## The Double Lining System Geosynthetic Clay Liner

### EUROBENT CS safer double lining !

**EUROBENT CS is an isolation, waterproofing system, which consists of two complementary components:**

- The geosynthetic barriers: PE, PP, PVC. It permanently protects against penetrating water and toxic substances.
- The geosynthetic clay liner (GCL). Water causes the bentonite to hydrate and thus renders the GCL impermeable.

The self-healing properties of the bentonite secure the integrity of the system in case of the geosynthetic barriers damage.

This distinguishes **EUROBENT CS** from other products, that also use bentonite as main component.

**EUROBENT CS** has additional advantages:

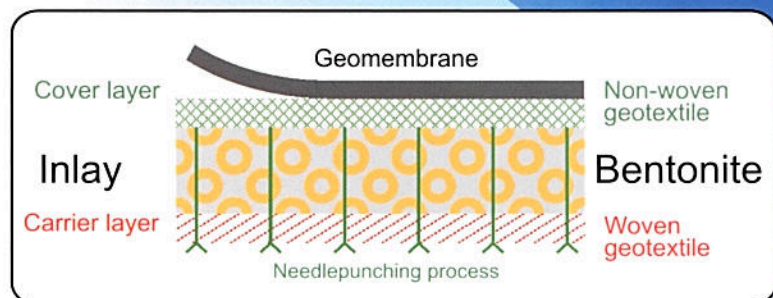
- ▶ Upgraded mechanical parameters
- ▶ Extremely tough
- ▶ Double lining system
- ▶ Self healing properties
- ▶ Puncture resistance
- ▶ Environment safety
- ▶ Verified and proven quality.



### Manufacturing technology

**EUROBENT CS** consists of two main components:

- Geomembrane as a geosynthetic barrier with high thickness and strength
- Bentonite mat based on:
  - Nonwoven as cover layer
  - Bentonite
  - Woven as carrier and reinforcement layer



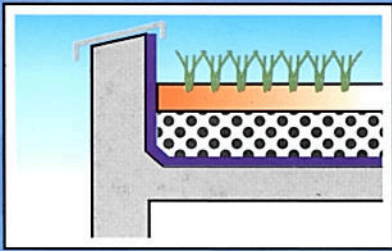
**EUROBENT CS** production process consists of the following:

- Technically designed needling process, which is made via specially designed hooked needles, punch through the nonwoven geo-textile capturing the fibres of the nonwoven and locking them to the woven fabric to hold the Bentonite in between to form a tough waterproofing membrane for easy installation on job sites
- A special lamination process to apply the HDPE, LDPE 0,2mm-2,5mm geo-membrane on the processed GCL to enable a second waterproofing composite barrier all in one product.

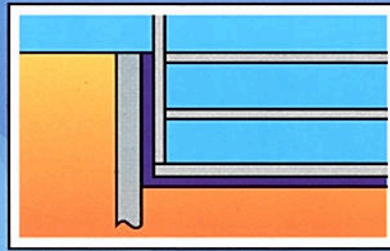


# Typical applications of **EUROBENT CS**

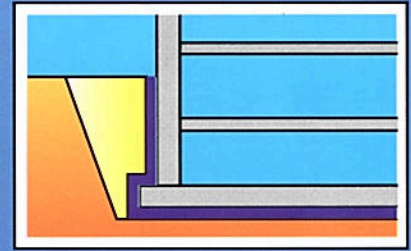
Flat roofs



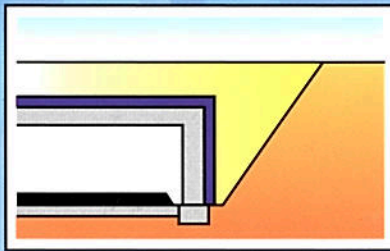
Concrete piles and sheet piling



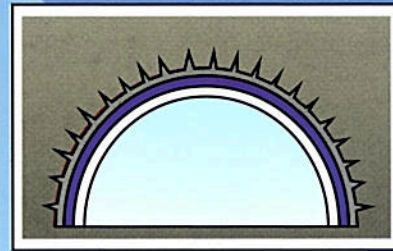
Foundations and other subsurface structures



Cut-and-cover tunnel construction



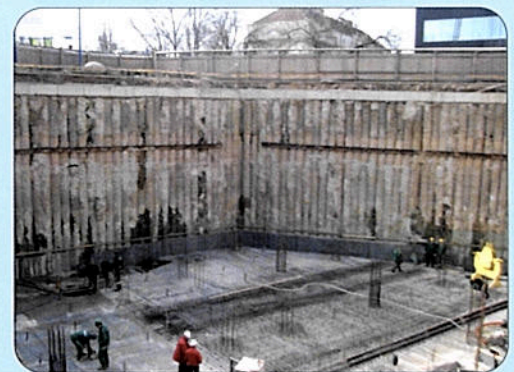
Tunnels (inner lining)



**EUROBENT CS** is widely used in building industry as well as in all applications, where structures have to be protected against groundwater. **EUROBENT CS** is the best alternative to secure investments against external agents.

Because of its sealing attribute, quality and purpose, **EUROBENT CS** is regularly used for the waterproofing of foundations to:

- Buildings
- Basements
- Tunnels
- Underground garages
- Flat roofs
- and all other objects



**EUROBENT CS**

black / green geomembrane thickness (mm)	width (m)	length (m)
0,2	5,00 / 2,50	80 - 10
0,5	5,10 / 2,55	40 - 10
0,6	5,10 / 2,55	40 - 10
1,0	5,10 / 2,55	20 - 5
1,5	5,10 / 2,55	20 - 5
2,0	5,10 / 2,55	20 - 5
2,5	5,10 / 2,55	20 - 5

Non-standard roll dimensions possible upon request.



**Eurobent Sp. z o.o.**

ul. Kliczkowska 42, 58-100 Świdnica, Poland

tel./fax: 0048 74 857 71 88

office@eurobent.com, www.eurobent.com